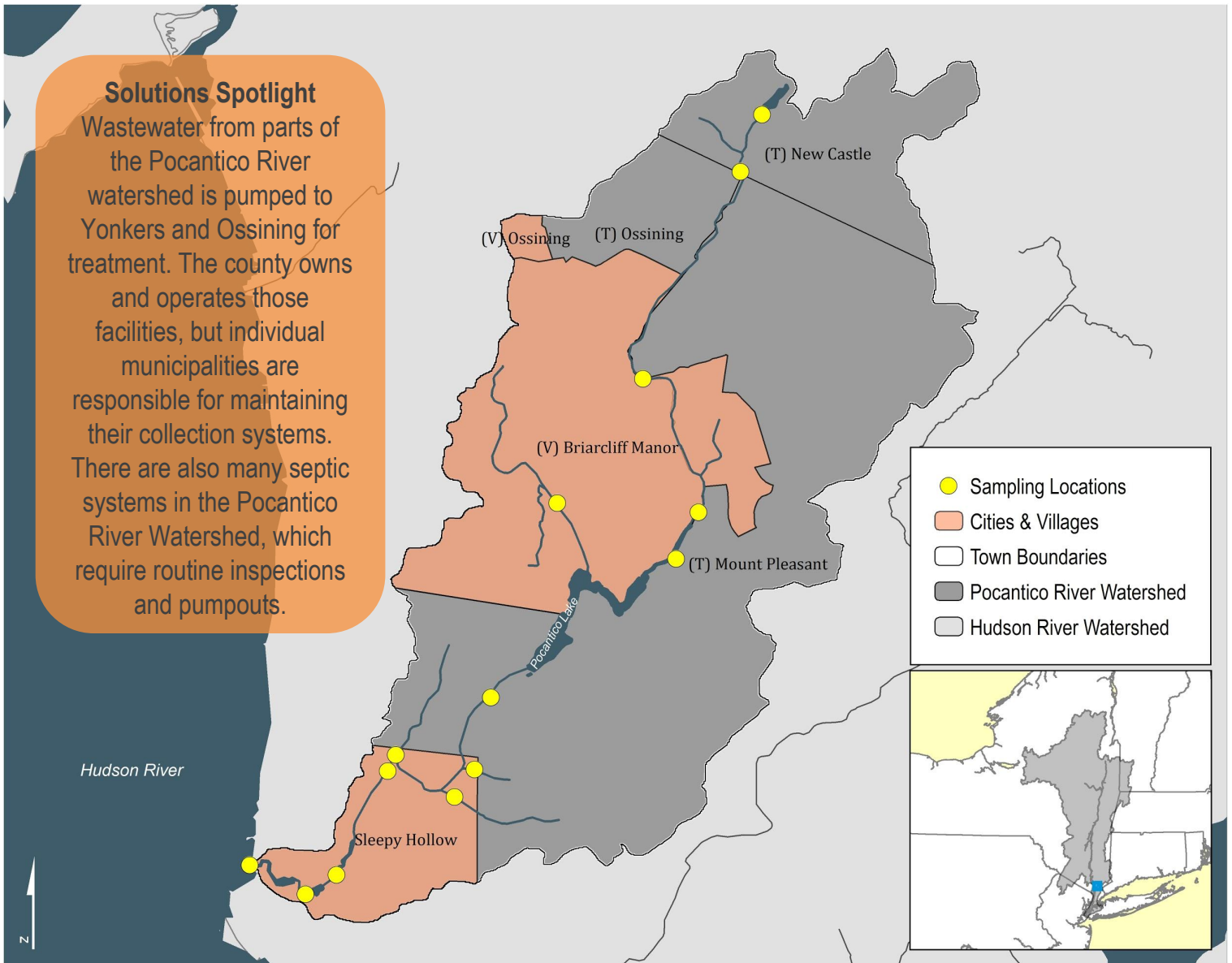


# POCANTICO RIVER

Community Water Quality Monitoring Results

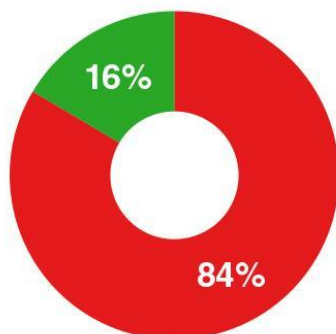
2012-2019



## What the Data Show

What portion of samples were safe for swimming?

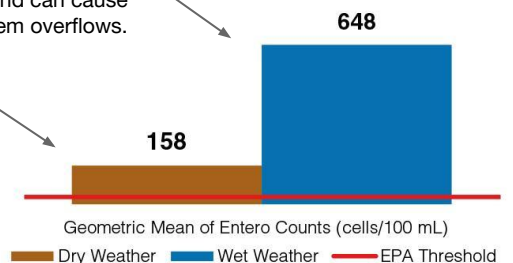
Most samples collected at non-tidal sites did not meet the EPA guideline for safe swimming.



How high were the bacteria levels?

Bacteria levels are much greater after rainfall, which causes runoff, and can cause wastewater system overflows.

Even in dry weather, levels exceed the safe swimming threshold by a large margin.



More: Explore a watershed map, data from each sampling site, year-to-year patterns and other info at [riverkeeper.org/water-quality/citizen-data/pocantico-river](http://riverkeeper.org/water-quality/citizen-data/pocantico-river).

Learn about the Pocantico River Watershed Alliance at [pocanticorwa.wixsite.com/prwa](http://pocanticorwa.wixsite.com/prwa).

## Community Science

The water quality data presented here are based on an analysis of 617 samples collected since 2012 by watershed residents and Riverkeeper. Samples are collected monthly from May to October and processed by the Sarah Lawrence College Center for the Urban River at Beczak. To get involved, contact Sebastian Pillitteri at [spillitteri@riverkeeper.org](mailto:spillitteri@riverkeeper.org).

### Why We Measure Bacteria

Fecal indicator bacteria such as *Enterococcus* ("Entero") usually do not make us sick. But because they live in the guts of warm-blooded animals, when these bacteria are present in water, pathogens that can make us sick may also be present.

Sources of fecal bacteria may include sewer overflows and failures, inade-

quate sewage treatment, urban or farm runoff, septic system failures, wildlife and contaminated sediment.

While research continues, the EPA has set thresholds to define if water is safe for swimming based on decades of science relying on measurements of these bacteria. Data are shown in Entero cells per 100 mL.

## About the Pocantico River

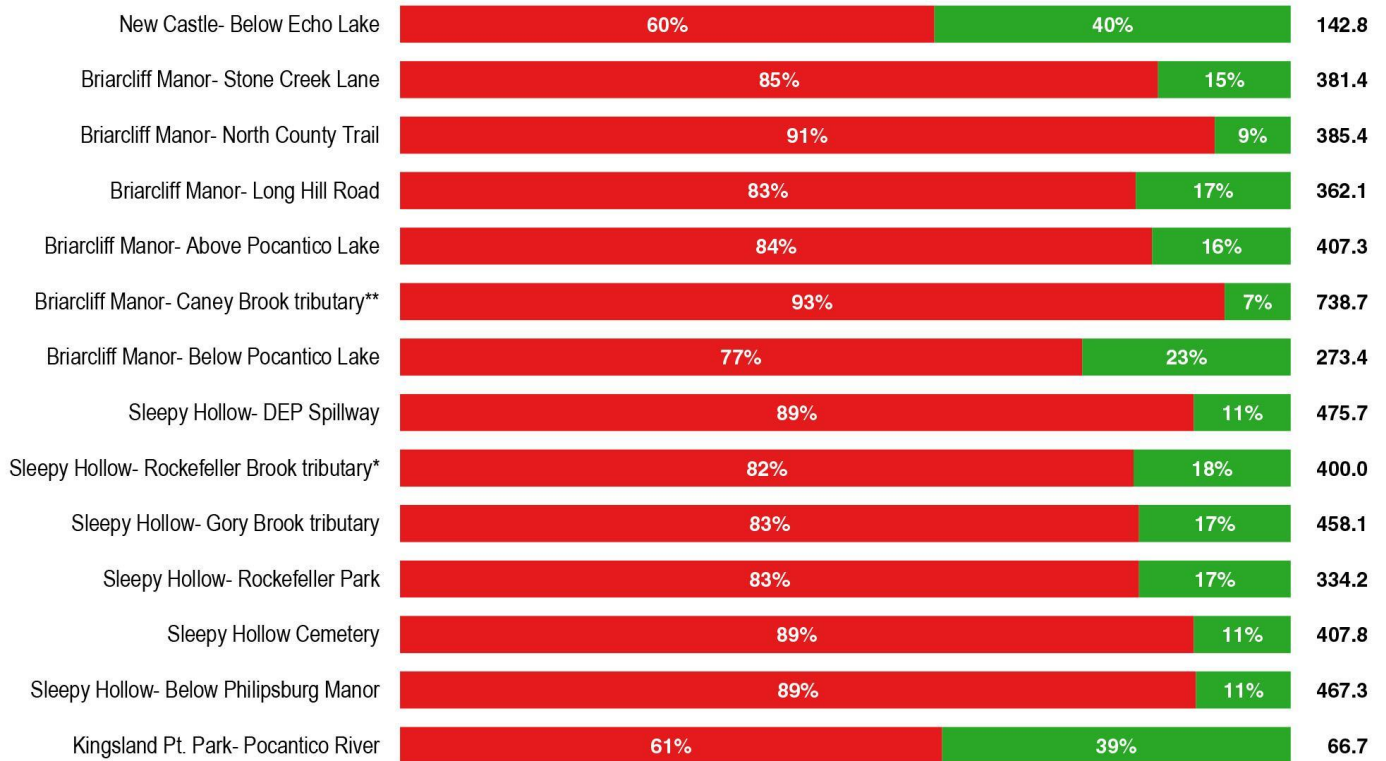
Flowing from Echo Lake in the town of New Castle, the Pocantico's course is bisected by Pocantico Lake, before joining the Hudson in Sleepy Hollow. Though subject to development pressure, about 63% of the watershed is forested, and less than 10% is covered with impervious surfaces.

## Signs of Progress

Pace University students and researchers are working with the Pocantico River Watershed Alliance to survey watershed stakeholders and understand their values and perceptions regarding the Pocantico River.

What portion of samples at each site were acceptable for swimming? EPA threshold: single sample should not exceed 60

How high were bacterial levels? EPA threshold: Geometric Mean should not exceed 30



Sampling began in 2012 and expanded to these sites in \*2014 and \*\*2015.